



US Army Corps  
of Engineers®

# Interior Drainage Plan

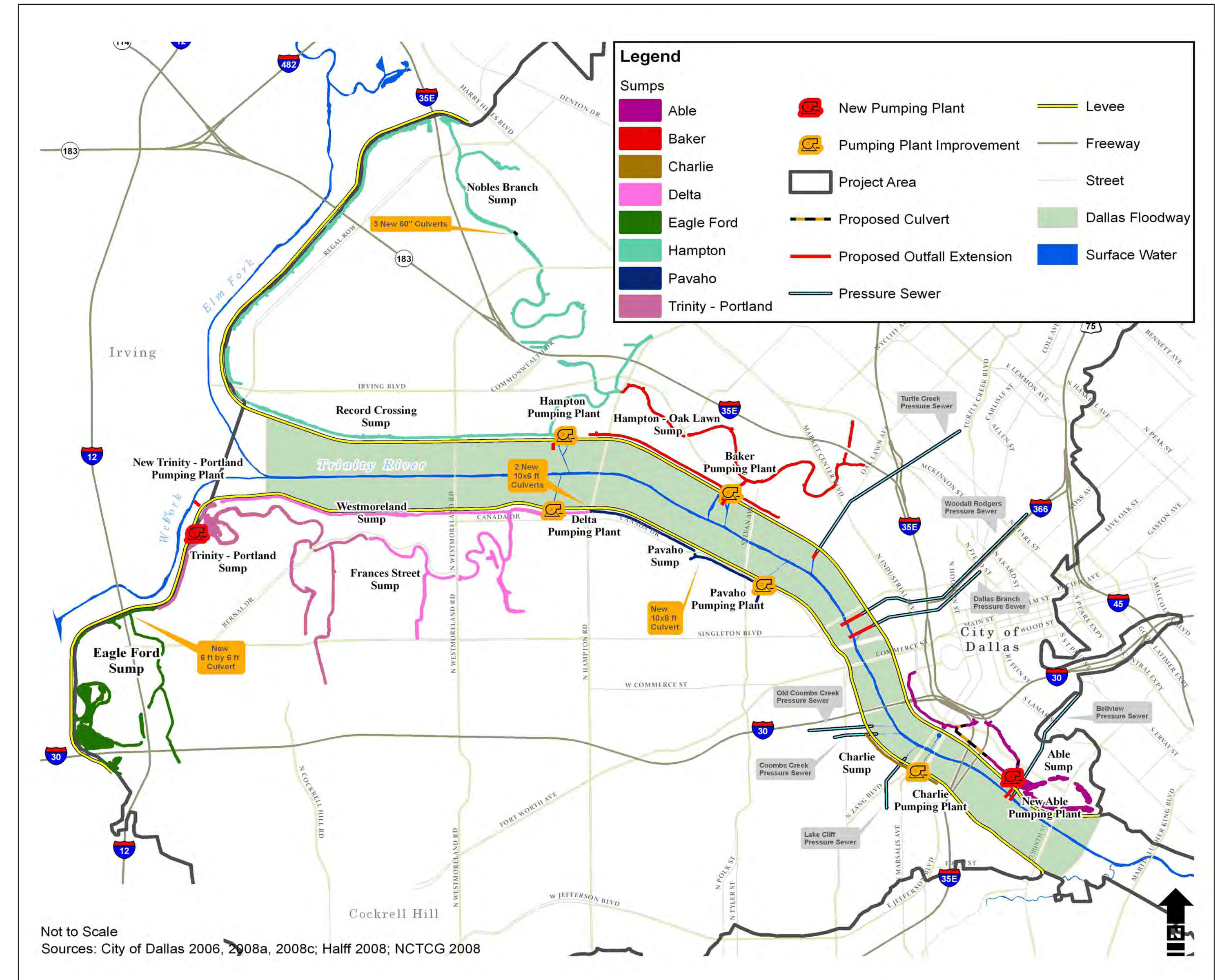


## EAST LEVEE INTERIOR DRAINAGE SYSTEM PROPOSED IMPROVEMENTS

- ◆ **Hampton Basin**
  - Construct new 700,000 gallons per minute (GPM) pump station and outfall
  - Rehabilitate existing New Hampton Pump Station and demolish old existing pump station
  - Install three, 60-inch diameter culverts at Empire Central Drive
- ◆ **Baker Basin**
  - Construct new 700,000 GPM pump station and outfall
  - Rehabilitate existing New Baker Pump Station
  - Decommission Old Baker Pump Station and outfall
  - Extend New Baker Pump Station outfall 300 feet
- ◆ **Able Basin**
  - Decommission existing Able Pumping Plant and outfall
  - Construct new 340,000 GPM pumping plant and outfall adjacent to Belleview Pressure Sewer
  - Install culvert connecting Sump Ponds 1 and 5
  - Enact Environmental Quality Measures
- ◆ **Pressure Sewers**
  - Extend Dallas Branch Outfall 1,100 feet
  - Extend Woodall Rodgers Outfall 1,100 feet
  - Extend Turtle Creek Outfall 300 feet
  - Extend Belleview Outfall 300 feet

## WEST LEVEE INTERIOR DRAINAGE SYSTEM PROPOSED IMPROVEMENTS

- ◆ **Trinity-Portland Basin**
  - Construct new 250,000 GPM pumping plant and outfall
- ◆ **Delta and Pavaho Basins**
  - Rehabilitate existing Delta Pump Station
  - Install one, 6 foot by 6 foot culvert between Trinity-Portland and Eagle Ford Sumps
  - Demolish existing Pavaho Pump Station
  - Construct new 375,000 GPM pump station at Pavaho Pumping Plant
  - Install two, 10 foot by 6 foot culverts under Sylvan Avenue
  - Install one, 10 foot by 8 foot culvert under Canada Drive
- ◆ **Charlie Basin**
  - Demolish existing Charlie Pump Station
  - Construct new 225,000 GPM pump station



**Proposed Interior Drainage Systems Improvements**

- ◆ Implementation of these proposed improvements would reduce the stormwater flood risk for structures located within the predicted flood area.
- ◆ The City of Dallas is proactively planning pump station improvements. Specifically, the City of Dallas plans to initiate construction during 2010 for improvements to the Baker and Pavaho Pumping Plants. The City of Dallas also has started design for Trinity-Portland, Hampton, Charlie, and Delta pump stations.

For more information, please visit the project website at: [www.dallasfloodwayprojecteis.com](http://www.dallasfloodwayprojecteis.com)